



SFERE TRITTICO

design **Simone Micheli**

PATENTED

**5 YEARS
WARRANTY**

MATERIAL:

Super slim heating body in painted carbon steel.

FIXING KIT:

Brackets, airvent, hexagonal tool, plugs and screws for mounting suitable for use on compact or hollow brick, installation notice.

The kit is certified from TÜV in compliance with VDI 6036-class 4.

VALVE KIT INCLUDES - STANDARD VERSION (Only for standard version):

Valves with thermostatic head
 Fittings for copper pipe (Ø 12/14/15)
 Fittings for multilayer pipe (Ø 16 x2)
 Ready- to install pipe connection kit

PACKAGING:

The radiator is protected by a film in polyethylene and with a carton box. Use and maintenance notice included.

PAINTING PROCESS:

Painted with ecological epoxy. (Certificate DIN 55900-1,-2). Thermal outputs certified in accredited laboratories in compliance with European norm EN442.

COLOURS:

Radiators and accessories: standard white R01 colour. For other colours see colour chart.

FOR WALL-FIT VERSION THE VALVES MUST BE PURCHASED SEPARATELY.

PRODUCT CERTIFICATES



P. max: 5 bar

T. max: 110° C

Available for central heating systems

Connections: n° 2 x G 1/2" - n° 1 x G 1/2"

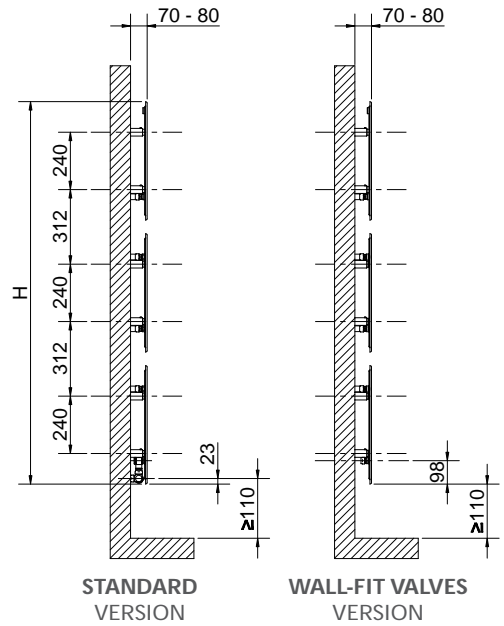
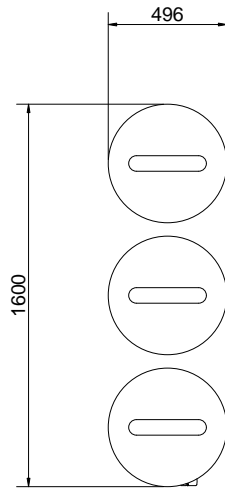
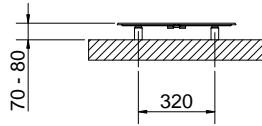
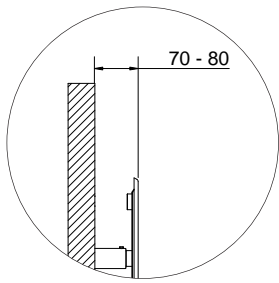
AWARD



ACCESSORIES

Manual wall-fit valves	
	WALL-FIT VALVES Art. Nr. 5991990311226
	Fitting for wall-fit valves Copper connection Ø 12/14/15 Art. Nr. 5991170300001
	Fitting for wall-fit valves Multilayer connection Ø 16 x2 Art. Nr. 5991170300002

Accessories and spare parts- see from page 371.

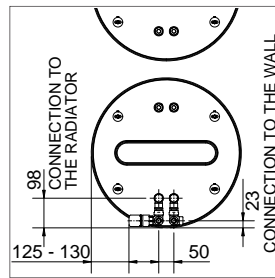


BUILT-IN CONNECTIONS FOR SFERE TRITTICO



TUTORIAL
INSTALLING
THE CONNECTION KIT

Version with PIPE CENTRES 50 mm



SFERE TRITTICO COMPLETE WITH WALL-FIT HYDRAULIC CONNECTION

Art. Nr.	Diameter	Pipe Centres	A	Dry Weight	Surface	Water Content	Thermal output Watt		Exponent n	
							$\Delta t = 50^{\circ}\text{C}$	$\Delta t = 30^{\circ}\text{C}$		
	D [mm]	I [mm]	[mm]	[Kg]	[m ²]	[lt]				
STANDARD VERSION	3540806100221	496	50	24	24,3	1,2	0,9	582	316	1,195
VERSION FOR WALL-FIT VALVES	3540806100226	496	50	93	24,3	1,2	0,9	582	316	1,195

Art. Nr. are referred to white R01 colour - version.

Art. Nr. of the standard version, is inclusive of **VALVE, HOLDER AND THERMOSTATIC HEAD**, compliant with UNI EN215:2007 and DM 19/02/2017.

Art. Nr. of the wall fit version includes only **2 X 1/2" CONNECTIONS**; valves to be ordered separately.

SFERE TRITTICO WITHOUT WALL-FIT HYDRAULIC CONNECTION

Art. Nr.	Diameter	Pipe Centres	A	Dry Weight	Surface	Water Content	Thermal output Watt		Exponent n	
							$\Delta t = 50^{\circ}\text{C}$	$\Delta t = 30^{\circ}\text{C}$		
	D [mm]	I [mm]	[mm]	[Kg]	[m ²]	[lt]				
STANDARD VERSION	3540806100227	496	50	24	24,3	1,2	0,9	582	316	1,195
VERSION FOR WALL-FIT VALVES	3540806100228	496	50	93	24,3	1,2	0,9	582	316	1,195

Art. Nr. are referred to white R01 colour - version.

Art. Nr. of the standard version, is inclusive of **VALVE, HOLDER AND THERMOSTATIC HEAD**, compliant with UNI EN215:2007 and DM 19/02/2017.

Art. Nr. of the wall fit version includes only **2 X 1/2" CONNECTIONS**; valves to be ordered separately.

WITH BUILT-IN CONNECTIONS

Art. Nr.

5102001100001

For output at different Δt than 50°C , please refer to the following formula = desired output = output at $\Delta t 50^{\circ}\text{C}$ x (desired $\Delta t/50$)ⁿ



SFERE

design **Simone Micheli**

PATENTED

**5 YEARS
WARRANTY**

MATERIAL:

Super slim heating body in painted carbon steel.

FIXING KIT:

Brackets, airvent, hexagonal tool, plugs and screws for mounting suitable for use on compact or hollow brick, installation notice.

The kit is certified from TÜV in compliance with VDI 6036-class 4.

VALVE KIT INCLUDES - STANDARD VERSION (Only for standard version):

Valve and holder

Fittings for copper pipe (Ø 12/14/15)

Fittings for multilayer pipe (Ø 16 x2)

PACKAGING:

The radiator is protected by a film in polyethylene and with a carton box. Use and maintenance notice included.

PAINTING PROCESS:

Painted with ecological epoxy. (Certificate DIN 55900-1,-2).

Thermal outputs certified in accredited laboratories in compliance with European norm EN442.

COLOURS:

Radiators and accessories: standard white R01 colour.

For other colours see colour chart.

FOR WALL-FIT VERSION THE VALVES MUST BE PURCHASED SEPARATELY

PRODUCT CERTIFICATES



P. max: 5 bar

T. max: 110° C

Available for central heating systems

Connections: n° 2 x G 1/2" - n° 1 x G 1/2"

AWARD



SFERE WITH WALL-FIT VALVES

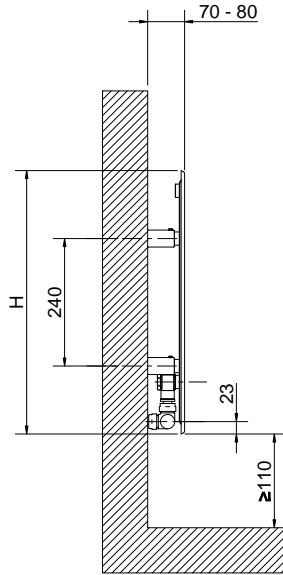
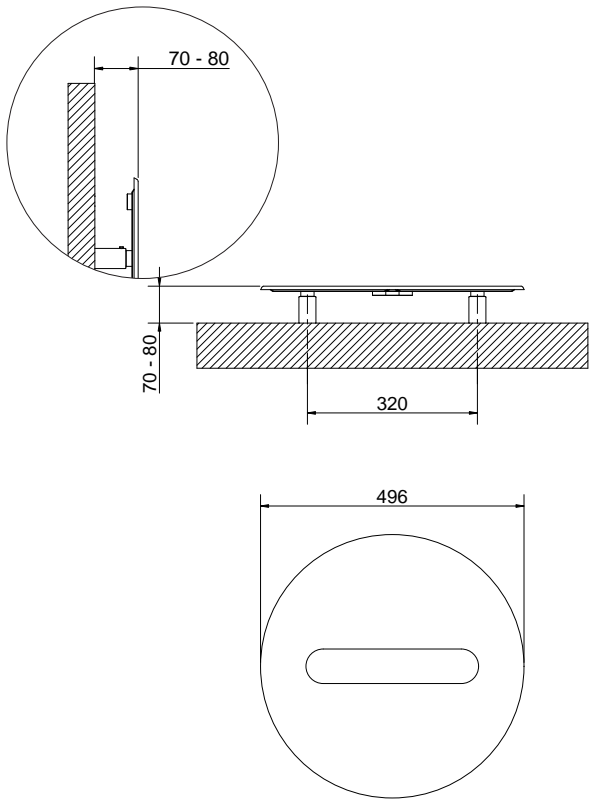


Wall-fit valves (OPTIONAL)

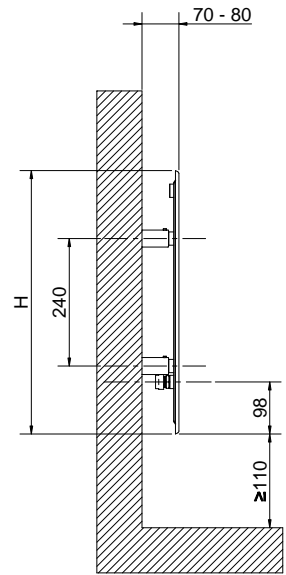


ACCESSORIES

	Manual wall-fit valves
	WALL-FIT VALVES Art. Nr. 5991990311226
	Fitting for wall-fit valves Copper connection Ø 12/14/15 Art. Nr. 5991170300001
	Fitting for wall-fit valves Multilayer connection Ø 16 x2 Art. Nr. 5991170300002

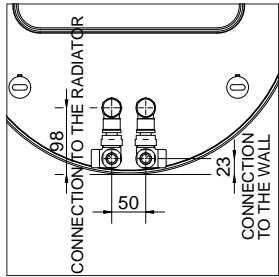


STANDARD
VERSION



WALL-FIT VALVES
VERSION

Version with PIPE CENTRES 50 mm



SFERE

	Art. Nr.	Diameter		A	Dry Weight	Surface	Water Content	Thermal output Watt		Exponent n
		D [mm]	l [mm]					$\Delta t = 50^{\circ}\text{C}$	$\Delta t = 30^{\circ}\text{C}$	
STANDARD VERSION	3540806100211	496	50	24	8,1	0,35	0,3	194	105	1,1950
VERSION FOR WALL-FIT VALVES	3540806100212	496	50	24	8,1	0,35	0,3	194	105	1,1950

Art. Nr. are referred to white R01 colour- version.

Art. Nr. of the standard version is inclusive of **VALVE AND HOLDER**.

Art. Nr. of the wall fit version includes only **2 X 1/2" CONNECTIONS** - valves to be ordered separately.

For output at different Δt than 50°C , please refer to the following formula = desired output = output at $\Delta t 50^{\circ}\text{C}$ x (desired $\Delta t/50$)ⁿ