

5085G

Wall hung wc with goclean® system

Complements: **Thermosetting wrapping seat&cover** (5085CW02)
Soft-closing thermosetting wrapping seat&cover (5085CW03)
Line accessories: TWO - HOOP - NOKÉ - FOLD

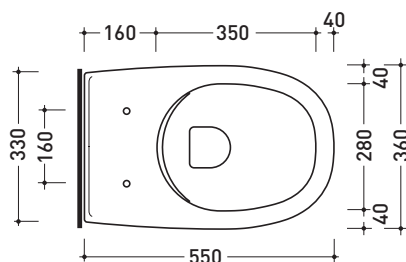
Technical accessories: **Universal fixing bracket for wall hung wc/bidet** (41/P)

Package dim. **56 x 37 x 40 cm** | Weight **23,5 kg** | Pz. Pallet n° **15**

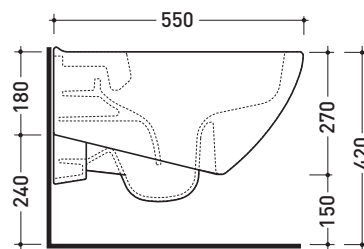


CE UNI EN 997

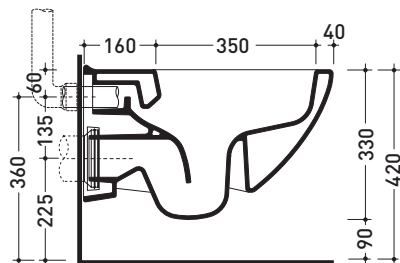
Dop-No997



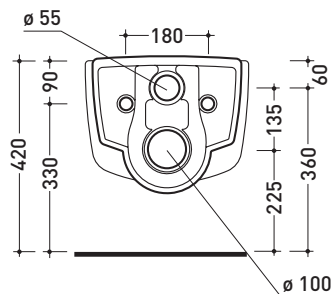
vista zenitale / zenital view



vista laterale / lateral view



sezione longitudinale / section



vista retro / back view

sizes in mm

Please consider a 2% tolerance on indicated measurements

CERAMIC: glossy finish



matt finish



FLAMINIA does not recommend combining this toilet model with rapid-flow/flushometer systems or traditional high tanks