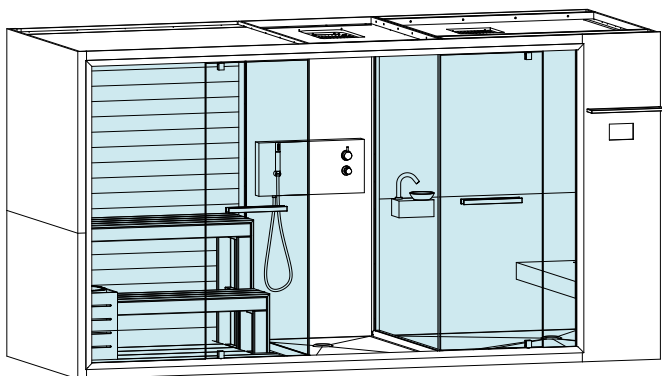


# ETHOS 400x150 H 215

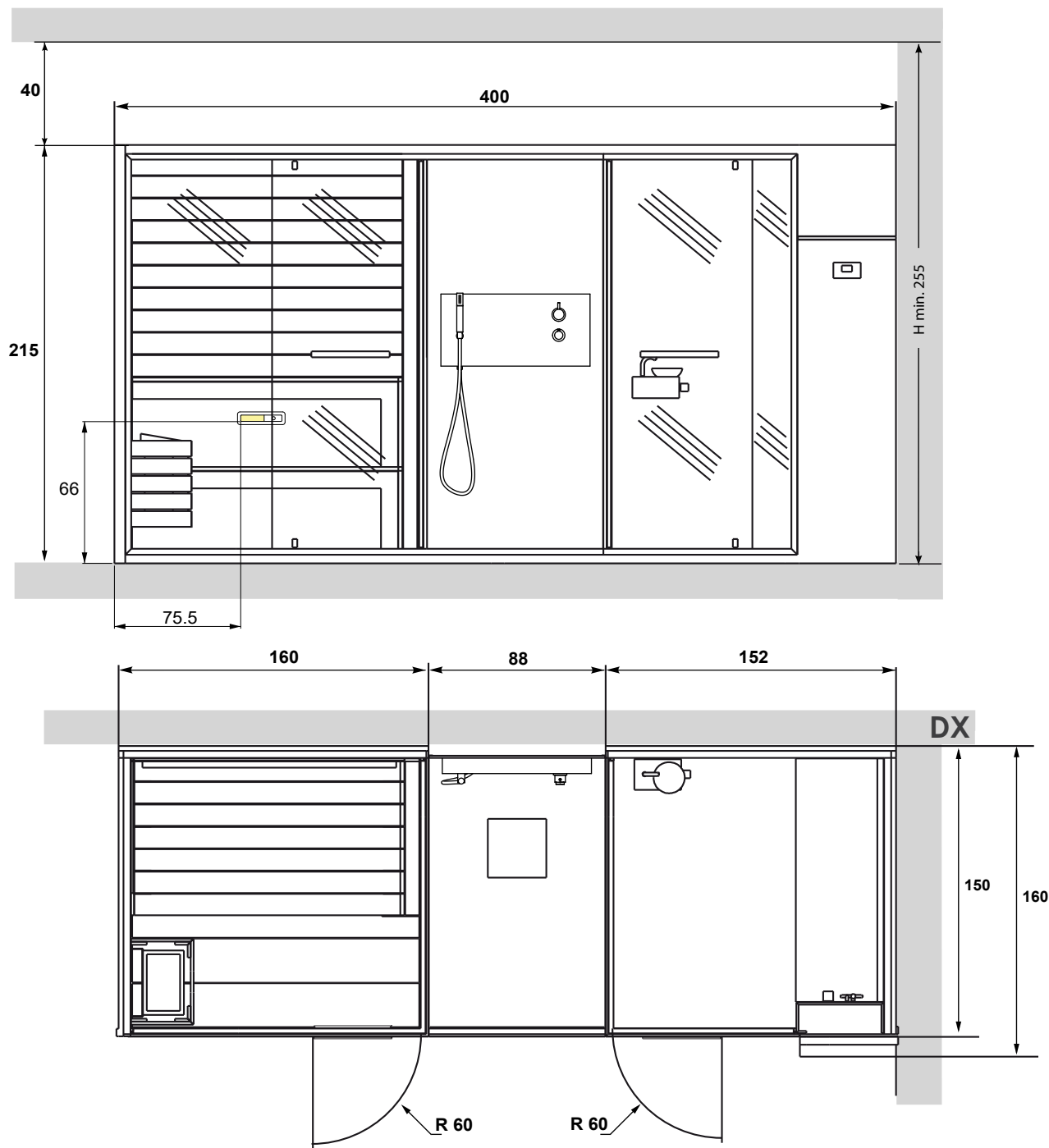
TURKISH BATH + SHOWER + SAUNA

RT VERSION

SAUNAVITA®  
calore naturale

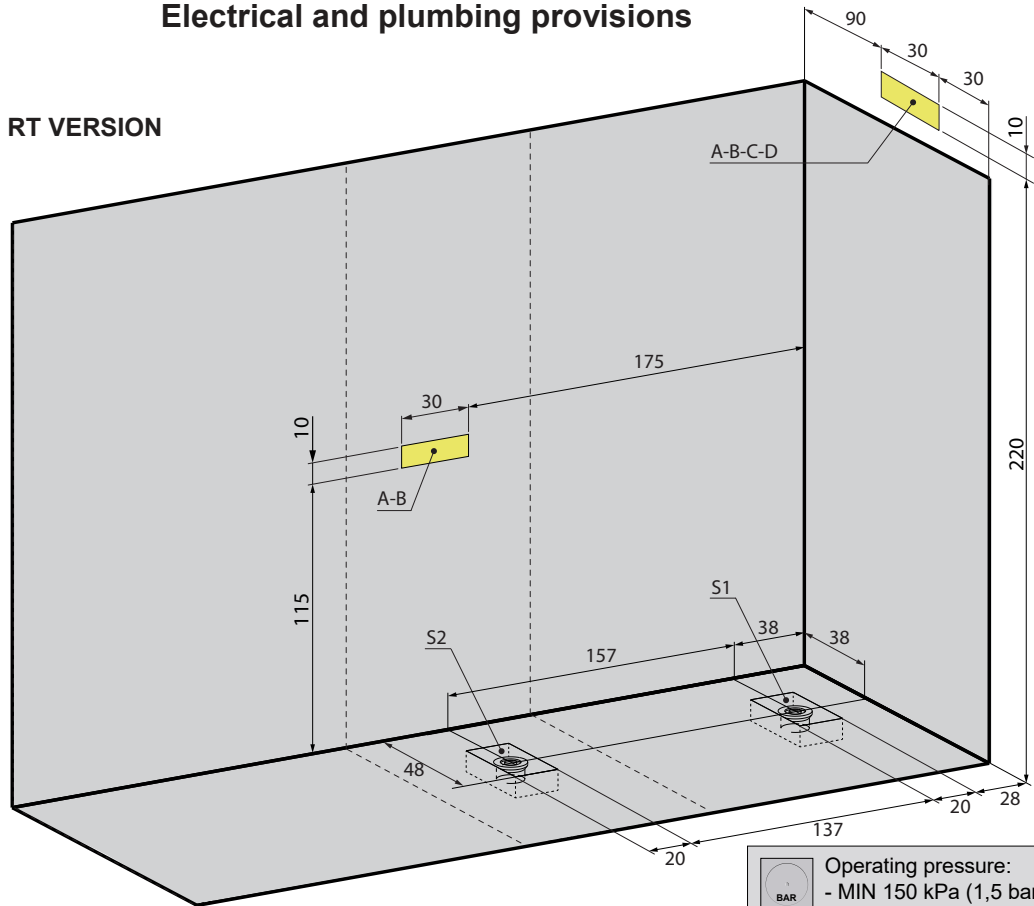


The overall dimension values are expressed in centimetres.  
The actual dimensions may vary by ± 1 cm.



The minimum height of the wall tiles without protrusions is equal to the height of the stall.  
On the walls there cannot be any greca or quarter round decorative patterns.

RT VERSION



### KEY

#### A-B- Water wall connections.

**A** - 1/2" F cold water wall connection (1,5-3,0 BAR).

**B** - 1/2" F hot water wall connection (1,5-3,0 BAR).

#### C-D- Electrical tube outlet.

**C** - Power cable outlet (SINGLE PHASE OR THREE PHASE).

**D** - Equipotential cable outlet.

**S1** - Turkish bath drain Ø 40mm.

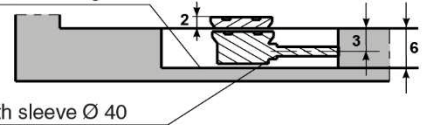
**S2** - Shower drain Ø 40mm.

If the water pressure is higher than indicated, install pressure reducers.

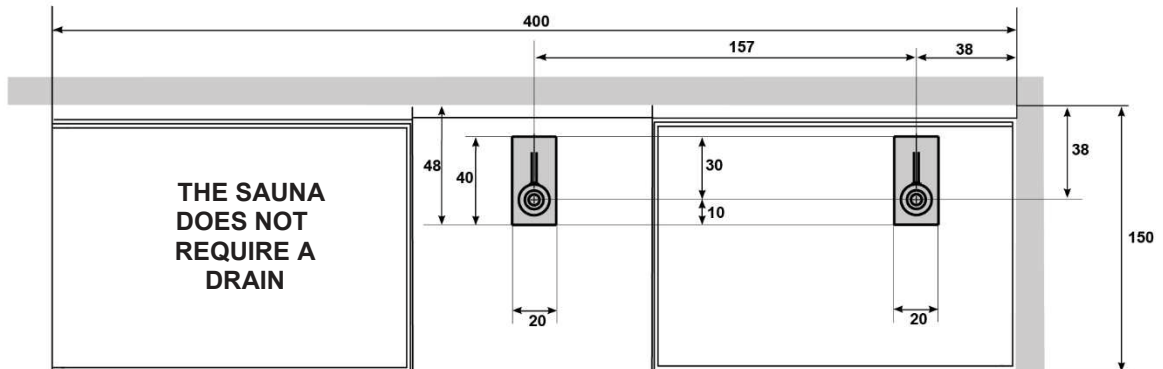
Provide shut-off cocks out of the dimensions of the product for hot and cold water closing.

	Operating pressure:
	- MIN 150 kPa (1,5 bar)
	- MAX 300 kPa (3,0 bar)
	Hot water temperature:
	- MAX 60°C (140°F)

Provide waterproof sheathing



ELECTRICAL CHARACTERISTICS:	RESISTANCES	Volts	A	Kw	Hz	MAXIMUM TEMPERATURE
TURKISH BATH	2x2000 W	230	17	4	50	50 °C
		400	10	4	50	
ELECTRICAL CHARACTERISTICS:	RESISTANCES	Volts	A	Kw	Hz	MAXIMUM TEMPERATURE
SAUNA	3x1500 W	230	21	4.5	50	100 °C
		400	7	4.5	50	



### GRUPPO GEROMIN S.r.l.

Via I° Maggio n°5 (zona Industriale)

30029 San Stino di Livenza VE

Tel. +39 0421 312249 / +39 0421 312250

http: www.gruppogeromin.com - email: info@gruppogeromin.com