

E





NL R 65 gurvg5p3φ05u



R жNPHXUe жBUCMÆCUR

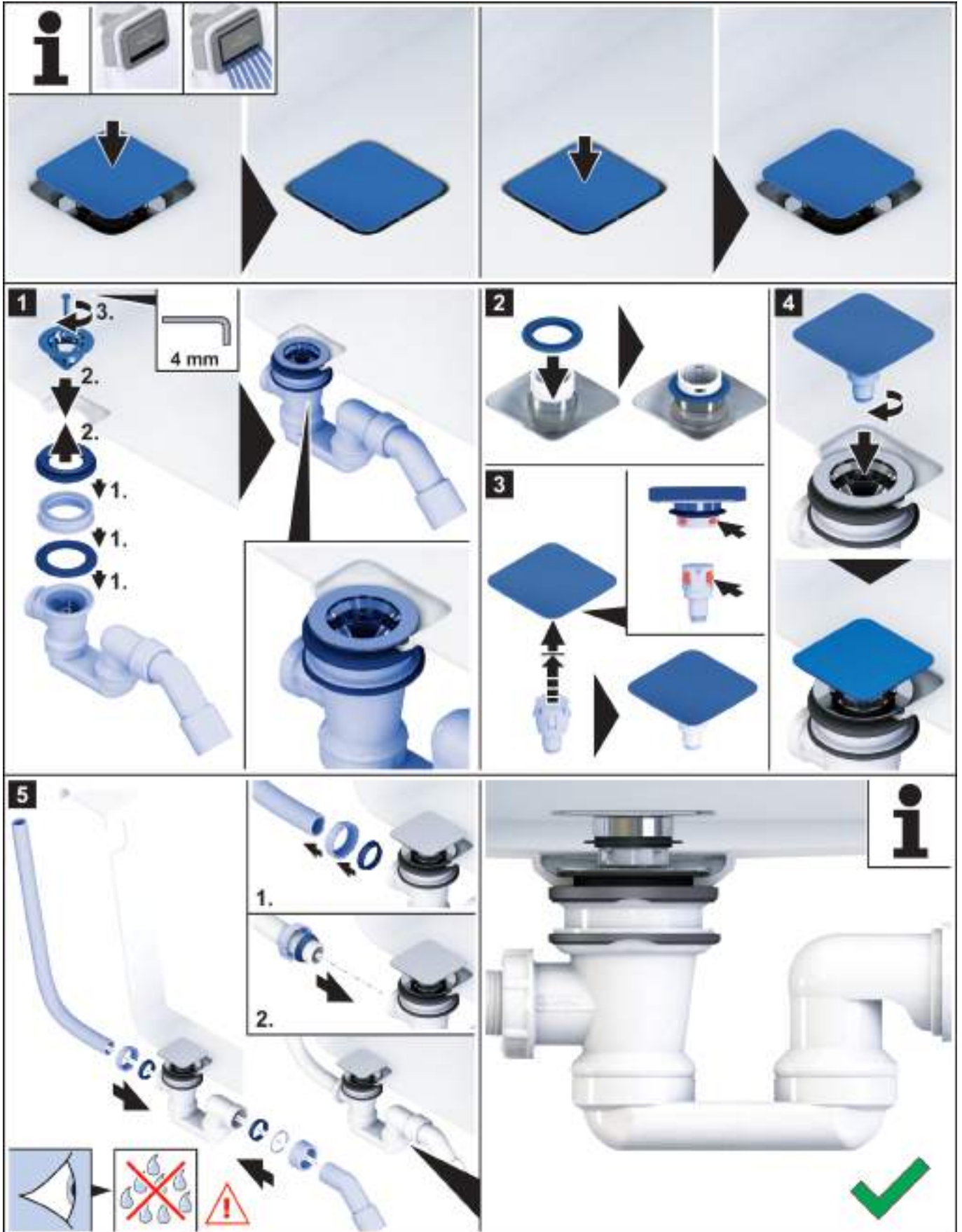


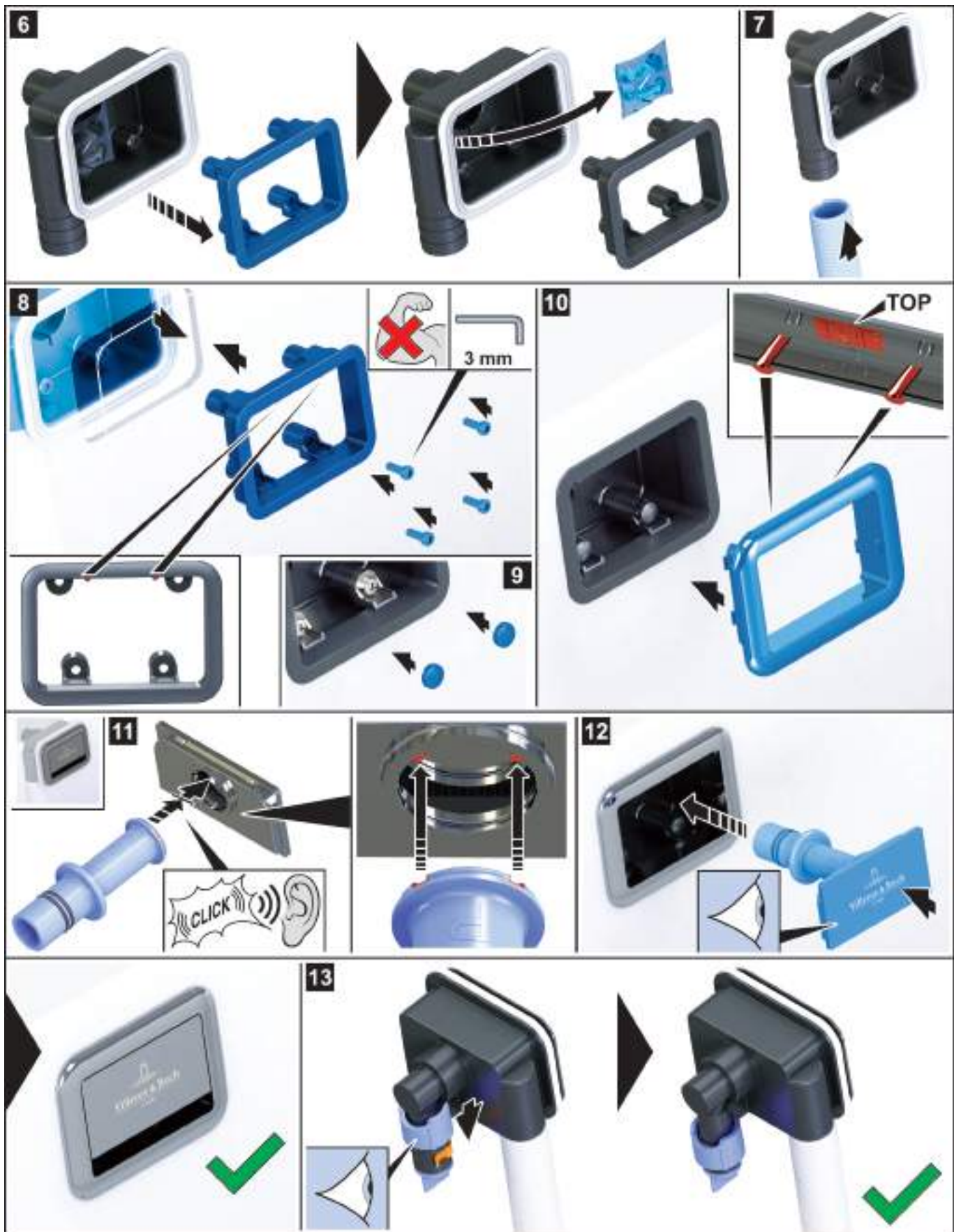
	& dd	c g r U r t 3
	& VCUS	c g r N 3

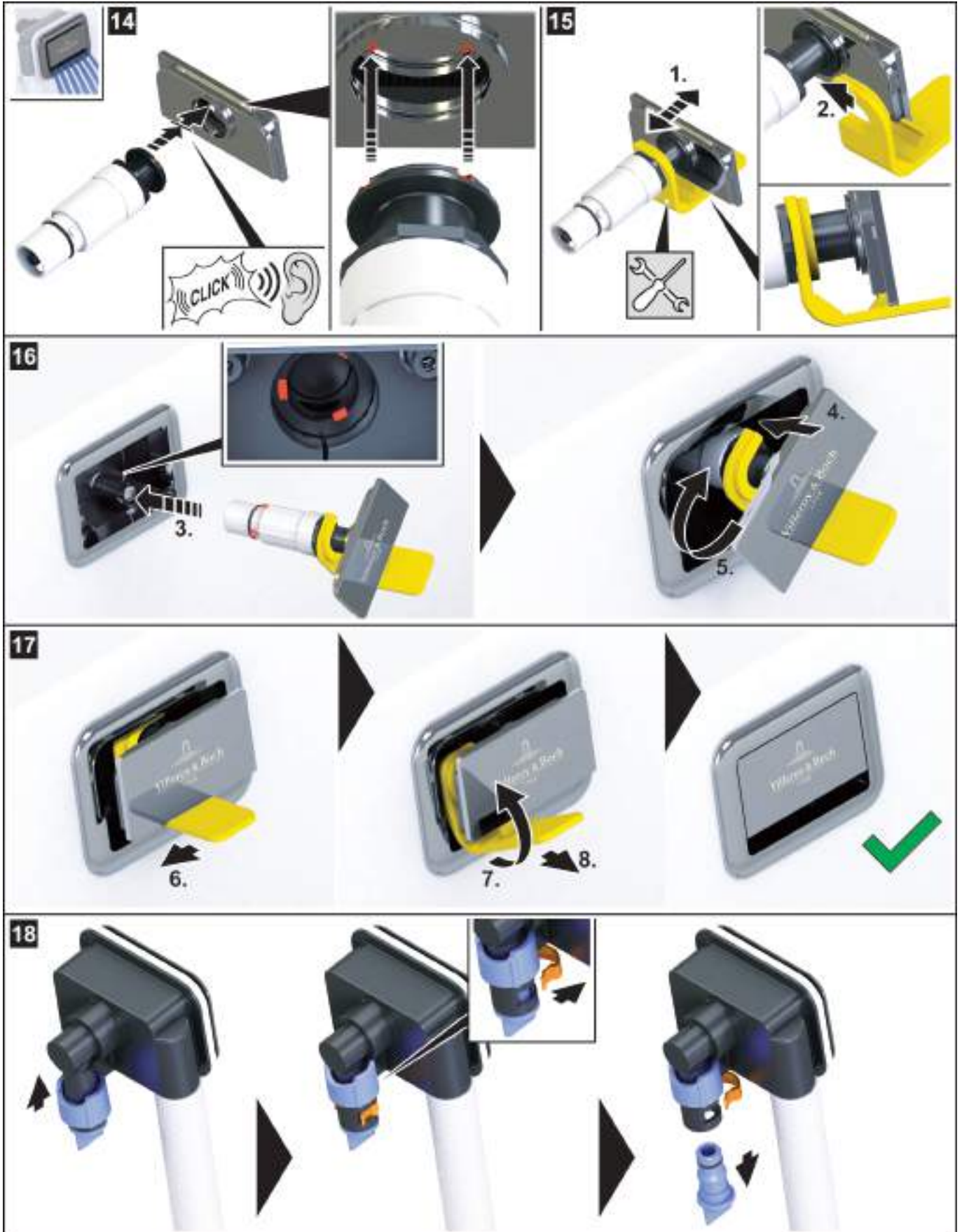
			
---	---	---	--










i



- max. 60 °C
- max. 18 l/min. (±10%) @ 2.5 bar
- max. 3.0 bar
- PH > 4

18



bNPPHXUe h BUCM

RM A

o o nu
o r
v
TTaG
u

c6H 1B3 TWIHA WDB
t c6H 1B3 TWIHA WDHWH

&CR AS

Yvgpr g5p p0 r5 065 - ln 6 wr g3 63 g5nr žc r r r r wr 0w 6 4 g2r rrw50hg34 6p0hg 065 6 wr g5ur g5p g3r n63 ž

bNPPHXUe zBUCMzCUR